

One



Tracing practice area consisting of four rows of handwriting lines. The first row contains six vertical dashed lines for tracing. The second row contains six diagonal dashed lines for tracing. The third and fourth rows each contain six dashed numbers '1' for tracing.

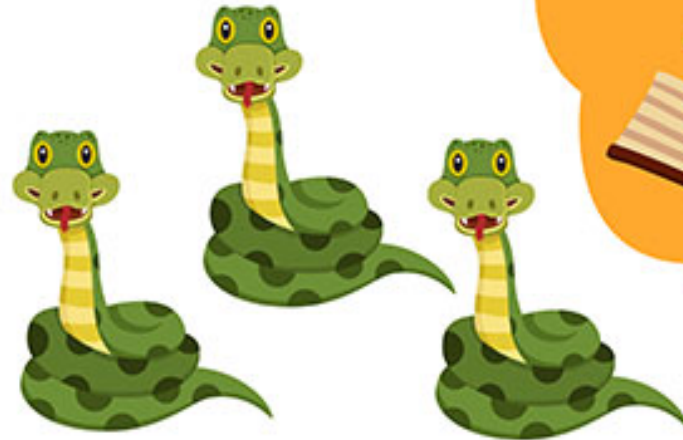


Two



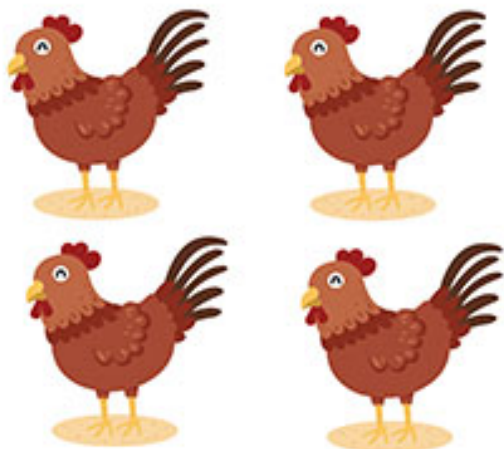


Three





Four



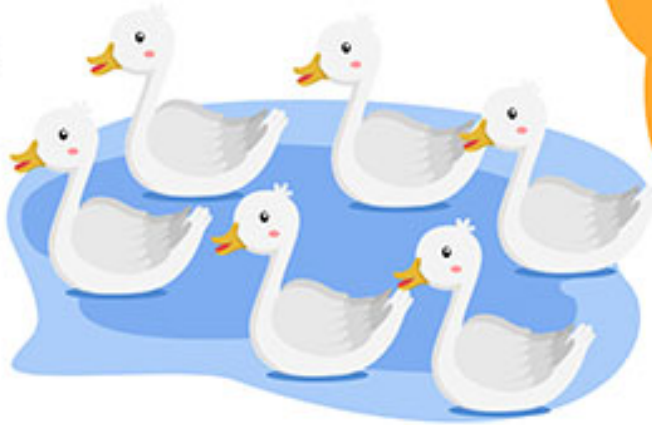


Five



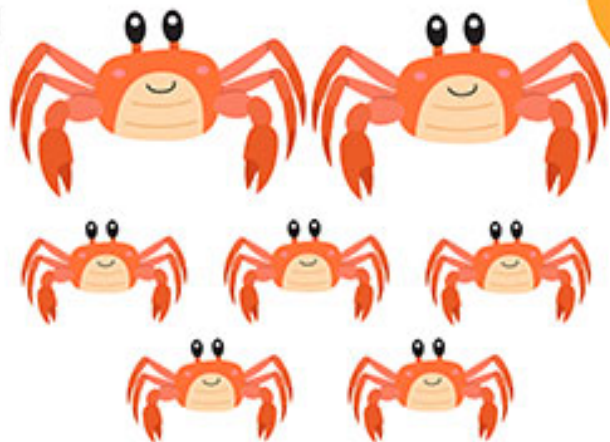
Handwriting practice section consisting of three rows of six boxes each. Each box contains a dotted number 5 for tracing. The first row has vertical dashed lines separating the boxes. The second and third rows have horizontal dashed lines for the middle of each letter.

6
six





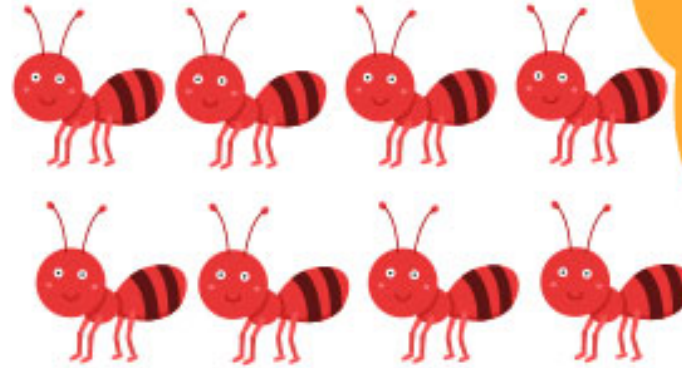
Seven



Handwriting practice area with four rows of lines. Each row consists of a solid top line, a dashed middle line, and a solid bottom line. The first row is divided into six vertical columns by dashed lines. The second, third, and fourth rows each contain six dashed number 7s for tracing, one in each column.

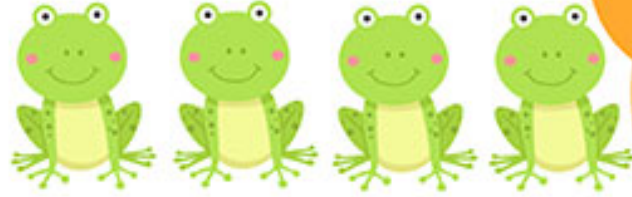


Eight





Nine





Ten

